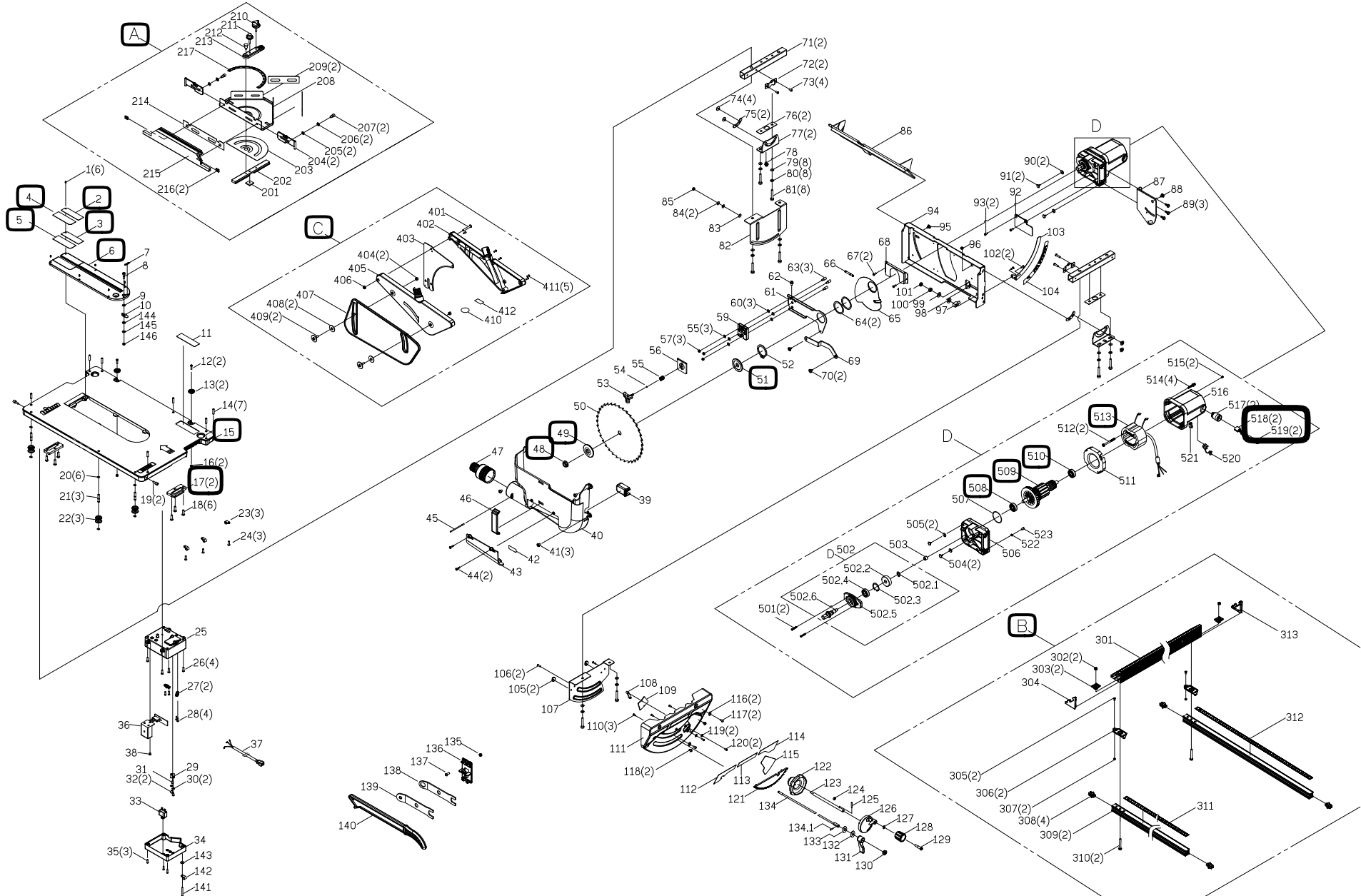




TWX7CS001 - Triton Contractor Saw Module





TWX7CS001 - Triton Contractor Saw Module

No.	Description	Qty
A	Mitre Gage Ass'y	1
B	Side Fence Ass'y	1
C	Guard Ass'y	1
D	Motor Ass'y	1
F	Wrench A & B	1
1	Set Screw	6
2	Wear Plate Right	1
3	Adhesive Paper for Wear Plate (RIGHT)	1
4	Wear Plate Left	1
5	Adhesive Paper for Wear Plate (LEFT)	1
6	Throat Plate	1
7	Label	1
8	Screw	1
9	Flat Washer	1
10	Locking Plate	1
11	Warning Label	1
12	Pan Head Screw	2
13	Cam Adjust Plate	2
14	Set Screw	7
15	Table Top	1
16	Nylon Nut	2
17	Keeper	2
18	Pan Head Screw	6
19	Round Head Philips Screw	2
20	C Type Ring	6
21	Adjust Screw	3
22	Levelling Bobbin	3
23	Clamp	3
24	Screw	3
25	Electrical Box	1
26	Screw	4
27	Cord Clamp	2
28	Self-Tapping Screw	4
29	Grounding Plate	1



TWX7CS001 - Triton Contractor Saw Module

No.	Description	Qty
30	Tooth Lock Washer	2
31	Self-Tapping Screw	1
32	Pan Head Screw	2
33	Overload	1
34	Electrical Box Cap	1
35	Self-Tapping Screw	3
36	Soft Start Ass'y	1
37	EU Cable Ass'y with Inline IEC C20 Male	1
37.1	Cord Guard	1
38	Self-Tapping Screw	1
39	Rod Cover	1
40	Dust Cover	1
41	Pan Head Screw	3
42	Warning Label	1
43	Dust Housing Cover	1
44	Screw	2
45	Pin	1
46	Slider Cover	1
47	Adaptor Dust Cover	1
48	Hex Nut	1
49	Flange	1
50	Blade	1
51	Inner Flange	1
52	External Retaining Ring	1
53	Knob	1
54	Ring	1
55	Spring	1
56	Riving Clamper	1
57	M5X0.8 Lock Nut	3
58	Flat Washer	3
59	Support Knife	1
60	Flat Washer	3
61	Lever	1
62	Hex Screw	1



TWX7CS001 - Triton Contractor Saw Module

No.	Description	Qty
63	Step Screw	3
64	Washer	2
65	Spacing	1
66	Spring	1
67	Pan Head Screw + Washer	2
68	Baffle Plate	1
69	Linkage Bar	1
70	Shoulder Screw	2
71	Tube	2
72	Fix Plate	2
73	Pan Head Screw	4
74	Pan Head Screw	4
75	Slider	2
76	Plate Frame	2
77	Slider	2
78	Eccentric roller	1
79	M6x16x1.6 Washer	8
80	Washer Lock M6	8
81	Hex Screw	8
82	Rear Bracket	1
83	M6x16x1.6 Washer	1
84	Washer	2
85	M6x1.0 Lock Nut	1
86	Left Dust Housing	1
87	Motor Holder	1
88	Screw	1
89	M6x15mm Screw	3
90	Pad	2
91	Block	2
92	Motor Plate	1
93	Pan Head Screw	1
94	Locker Bracket	1
95	Screw	1
96	Lock NUT	1



TWX7CS001 - Triton Contractor Saw Module

No.	Description	Qty
97	Block	1
98	Flat Washer	1
99	Flat Washer	1
100	Hex Nut	1
101	Hex Nut	1
102	Pan Head Screw + Washer	2
103	Angle Plate	1
104	Scale	1
105	CAM	2
106	Self-Tapping Screw	2
107	Reinforce Trunnion	1
108	Rear Deck	1
109	Pointer	1
110	Self-Tapping Screw	3
111	Front Panel	1
112	Warning Label	1
113	Label	1
114	Icon Label	1
115	Model Label	1
116	Flat Washer	2
117	Pan Head Screw	2
118	Button Head Screw	2
119	Flat Washer	2
120	M3x15mm Screw	2
121	Gear Plate	1
122	Bevel Wheel	1
123	Driving Thread Rod	1
124	Nut-Lock	1
125	Spring Wheel	1
126	Wheel Crank	1
127	Flat Washer	1
128	Grip Hand wheel	1
129	Screw	1
130	Cap Nut	1



TWX7CS001 - Triton Contractor Saw Module

No.	Description	Qty
131	Handel	1
132	Flat Washer	1
133	Washer	1
134	Linkage Ass'y	1
134.1	Pin	1
135	Nylon Nut	1
136	Tool Storage	1
137	Pan Head Screw	1
138	Wrench	1
139	Wrench	1
140	Push Stick	1
141	Self-Tapping Screw	1
142	Clamp	1
143	Flat Washer	1
144	Wave Washer	1
145	Flat Washer	1
146	M5x0.8 Lock Nut	1
301	Fence Body	1
302	Nylon Nut	2
303	Nut	2
304	End Cap (FRONT)	1
305	Flat Screw	2
306	Guide Plate	2
307	Hex Nut	2
308	Slider	4
309	Sliding Bar	2
310	Pan Head Screw	2
311	Scale Label	1
312	Scale Label	1
313	End Cap (REAR)	1
401	Socket Screw	4
402	Guard (RIGHT)	1
403	Riving Knife	1
404	Nut Locking	2



TWX7CS001 - Triton Contractor Saw Module

No.	Description	Qty
405	Guard (LEFT)	1
406	Nylon Nut	1
407	Side cover	1
408	Flat Washer	2
409	Screw	2
410	Warning Label	1
411	Self-Tapping Screw	5
412	Label	1
501	Flat Head Screw	2
502	Output Shaft Ass'y	1
503	Needle Bearing	1
504	Block	2
505	PU Pad	2
506	Gear Housing	1
507	O-Type Ring	1
508	Ball Bearing	1
509	Armature Ass'y	1
510	Ball Bearing	1
511	Conducting Ring	1
512	Self-Tapping Screw + Washer	2
513	Field	1
514	Screw + Washer	4
515	Set Screw	2
516	Motor Housing	1
517	Brush Holder	2
518	Brush Holder	2
519	Brush Cap	2
520	Strain Relief	1
521	Self-Tapping Screw	1
522	Tooth Lock Washer	1
523	Self-Taping Screw	1